


D A L V E Y
H A U S

A Treasured Legacy



“TO LIVE IS THE
RAREST THING
IN THE WORLD.
MOST PEOPLE
JUST EXIST.”

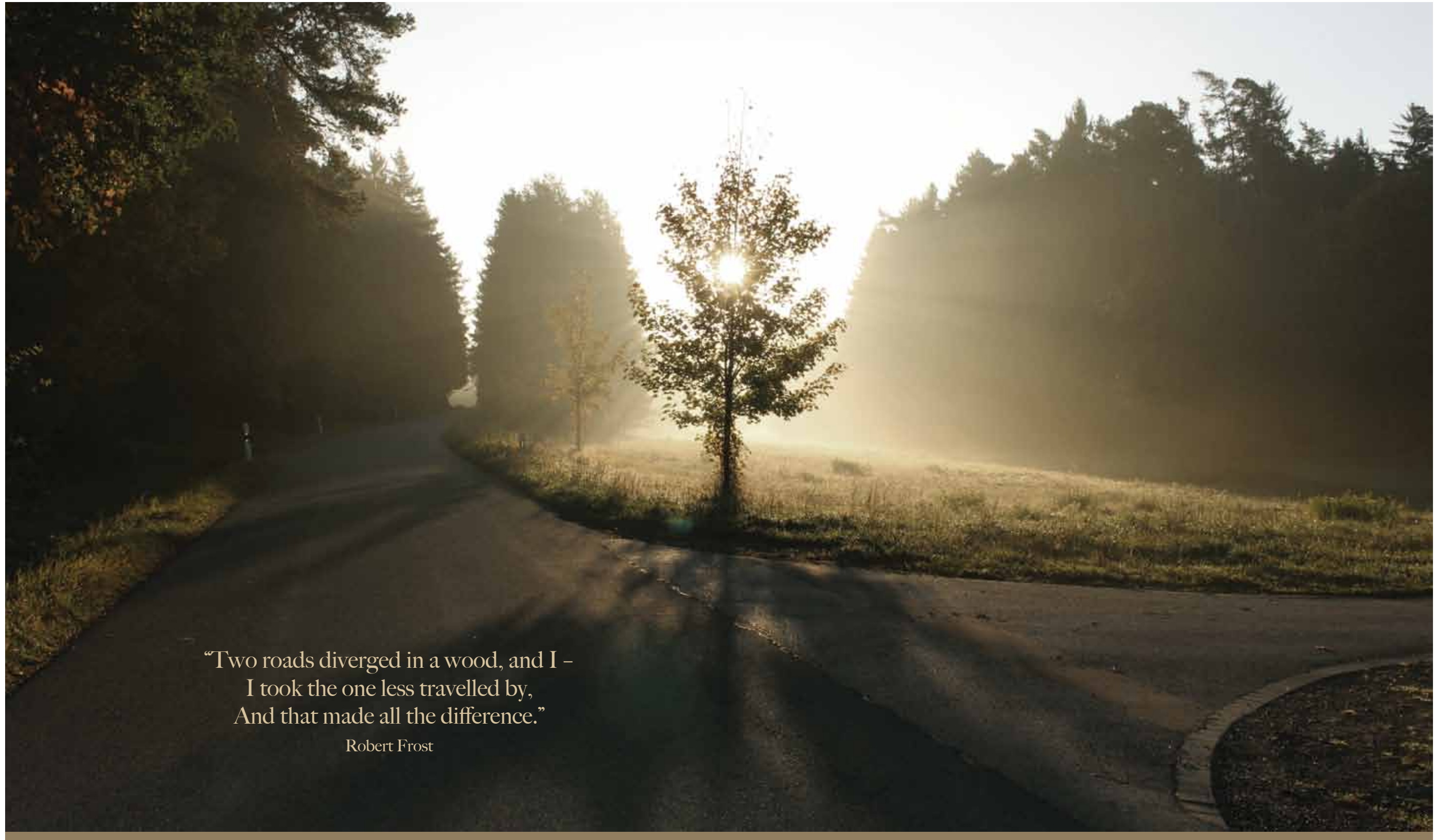
Oscar Wilde





HOME IS WHERE IT ALL BEGINS

A world of your own, this home is where dreams are planted. The ultimate living experience is timeless and refined, here in a freehold oasis that nurtures you, calms you, and enriches you.



*“Two roads diverged in a wood, and I –
I took the one less travelled by,
And that made all the difference.”*

Robert Frost

Life is a personal journey, deeply rooted in your home.

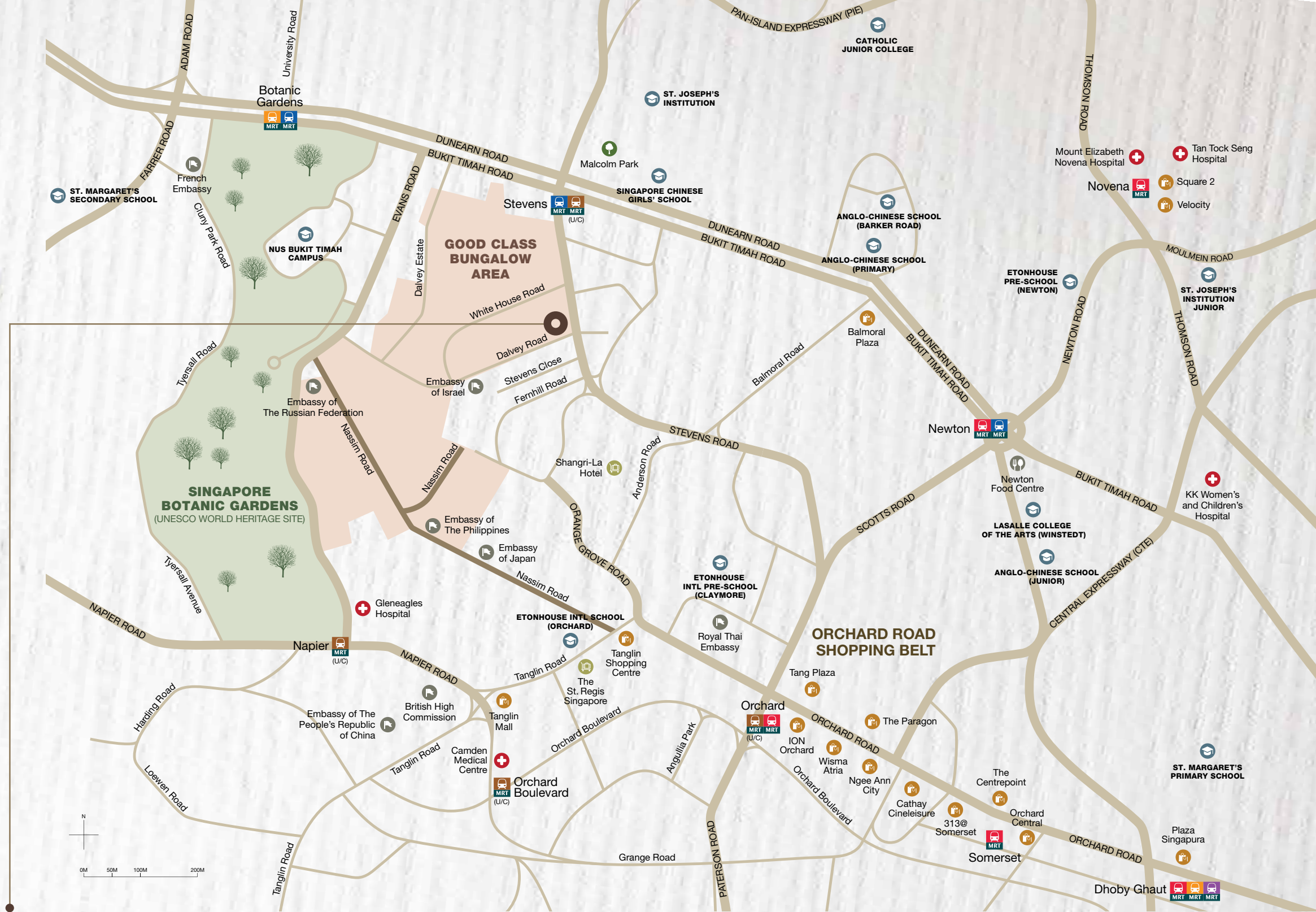
LIVE RICHER IN THE CITY NESTLED AMIDST LUSH GREENERY

Surrounded by Singapore's finest natural beauty, the highly sought-after premium site will surely delight residents with its proximity to the Botanic Gardens, Singapore's first UNESCO Heritage Site and a testament to the country's reputation as a City in a Garden.

该地段毗邻新加坡首个联合国教科文组织世界文化遗产——新加坡植物园，让您在家中坐拥“花园城市”最美丽的自然风光。

AT THE HEART
OF EVERYTHING

DALVEY
HAUS



This prestigious and highly-valued development is tucked within the prime Good Class Bungalow (GCB) enclave of District 10. It is just a leisurely stroll away from Stevens MRT station and a short train ride to Singapore's playground for the cosmopolitan. The Tanglin-Orchard district, acknowledged worldwide as a premium shopping, dining and tourist destination, is home to a vibrant mix of prime hotels, schools and embassies.

Dalvey Haus 坐落于第10邮区的优质洋房 (Good Class Bungalow) 区域内, 邻近史蒂文斯地铁站, 可乘地铁轻松抵达著名的东陵 - 乌节国际购物区 (Tanglin-Orchard district)。该区域不仅是新加坡高端购物、餐饮和旅游目的地, 并且还汇集了高档酒店、顶尖学校和各国使馆, 是新加坡这一国际大都会的黄金地段。



Within the Good Class Bungalow (GCB) enclave off the prime Orchard belt 靠近乌节路黄金地段, 坐落于优质洋房 (Good Class Bungalow) 区域中。



Near Singapore Botanic Gardens - UNESCO World Heritage Site 毗邻新加坡首个联合国教科文组织世界文化遗产——新加坡植物园。



Close proximity to top-ranking schools 与国际顶尖学校为邻。



Minutes' walk to Stevens MRT Station 步行数分钟可抵达史蒂文斯地铁站 (Stevens MRT)。



Neighbours with A-list bars, clubs and Orchard Road 临近高级酒吧、俱乐部和乌节路。

A WORLD-CLASS ADDRESS CLOSE TO THE HEART

Live on the fringe of Singapore's world-class fashion and retail belt. It's like stepping in and out of the walk-in closets of international brands, with such great ease. And all around, premium hotels and prime lifestyle hotspots abound.

与国际时尚商圈为邻，如同家中拥有了充满各类国际品牌的衣帽间；四周环绕的高档酒店和娱乐休闲场所，让您尽享奢华的生活方式。



ARTFULLY CURATED FOR THE DISCERNING

When you desire a life that flows above the mundane, you want a living space that does the same. On this oasis of grandeur, you will instinctively recognise that well-crafted quality and beauty live here too. Pair that with exceptional service and you have an outstanding home that truly delivers. For when it comes to having your desires met, nothing comes close to the personalised attention of KOP's award-winning hospitality arm, curated for Dalvey Haus to provide residents with top-level concierge services.



Artist's Impression

DALVEY
HAUS

A NEW CLASS OF SPLENDOUR BECKONS



COME HOME TO REFINED LUXURY

First impressions are everything. The sublime sequence of stately exteriors gives Dalvey Haus a modern urban gallery aesthetic. After all, it is a repository of carefully planned spaces, settings and experiences. Exuding tranquility and tropical lushness, this exquisite freehold habitat in a low-rise GCB enclave is all about elegance where elegance pervades.

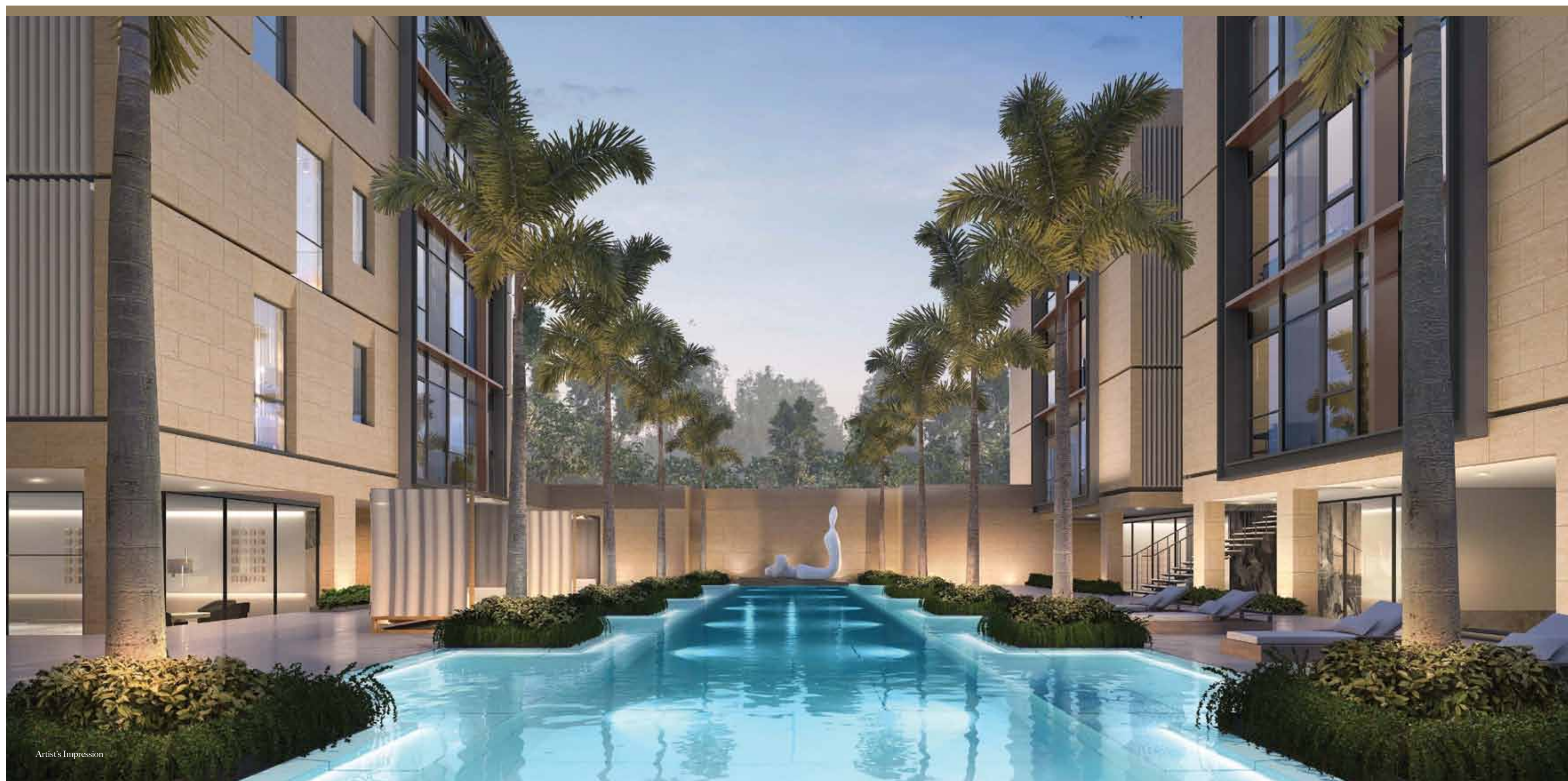
高雅庄重的外立面极致有序的排列着，赋予了 Dalvey Haus 现代都市画廊般的美，足以将让您对她一见钟情。这是一处精心规划并结合了生活设施和极致体验的空间。她充满了热带的绿意葱葱，无处不散发着宁静、高雅的气息。这座位于优质洋房（GCB）区域内、可拥有永久产权的低楼层别墅，将是您的精致住所。



Artist's Impression

FOR EVERY PASSION AND OCCASION

The central oasis is like an exquisite members-only resort club for the discerning 17 homeowners. The pool sparkles beautifully, cabanas exude five-star appeal, and the well-appointed gym inspires trending workouts. At the BBQ Pavilion, elegance and function blend perfectly so you can host cosy gatherings and smashing celebrations.



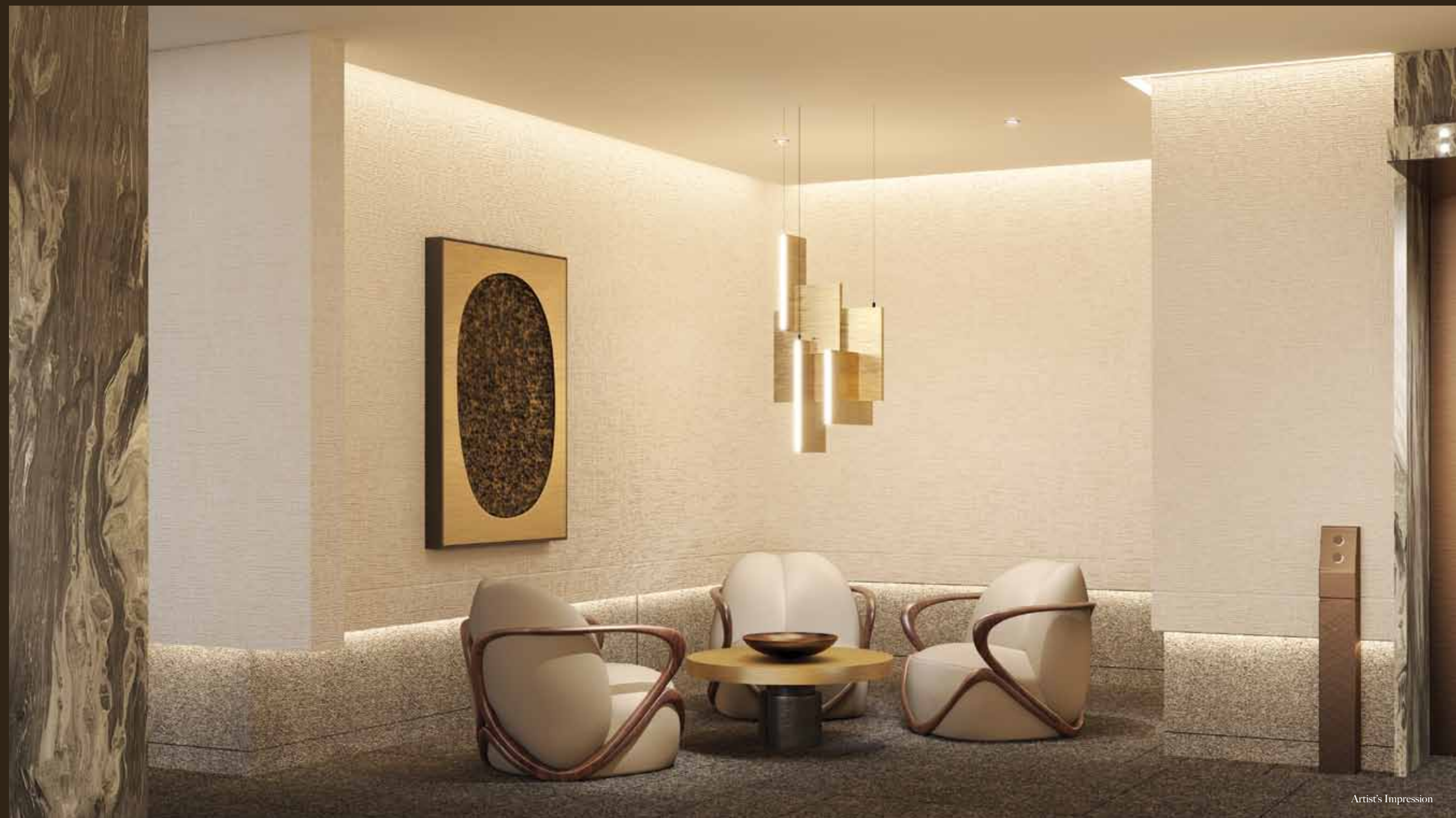
这片位于国际都市中央的绿洲是为您及其他17位业主专属打造的菁英会员俱乐部。这里的泳池波光粼粼，池边小木屋散发着五星级的魅力，设备齐全的健身房将激发您无限的运动热情；设计风格高雅、功能完善的烧烤区，能协助您完美地举办家庭聚餐以及各类庆典活动。

STEP INTO TIMELESS LUXURY LIVING

Dalvey Haus is a showcase of high-end architecture. Design schemes are elegantly simple, thoughtful and there is a pervasive sense of craft and quality to every item that you touch and see.



Artist's Impression



Artist's Impression

GRAND LIVING SPACES SPEAK VOLUMES

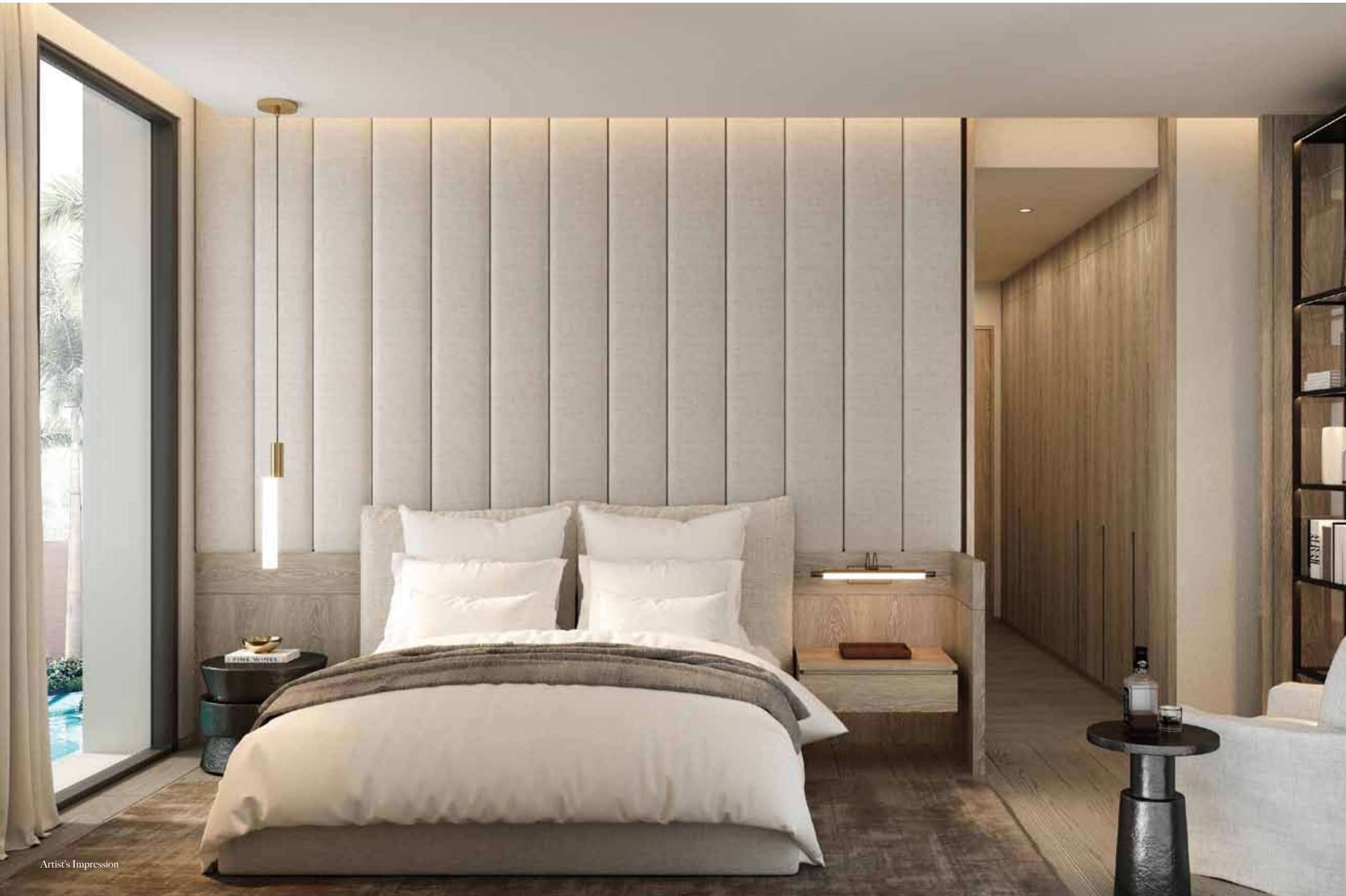
It's all about spatial drama. Designed with a home entertainer in mind, the grandest of rooms impresses with its double ceiling height while the accompanying large windows are invitations to marvel at serene outside views. An intimate dining area with a generously roomy kitchen is no doubt a welcoming space for guests to gather around.



Artist's Impression

在这里，每天都仿佛上演着一场关于空间结构运用的舞台剧。考虑到家庭居住的娱乐性，别墅中最大房间的天花板高度是普通房间的两倍。巨型玻璃的设计让室外宁静的美景直接映入眼帘，带来绝美的视觉冲击。私密的用餐区与独立厨房毗邻，是您访客的最佳聚集地。

LUXURY IN FINER DETAILS



Artist's Impression



Artist's Impression

Envision sumptuous ways to begin and end each day. Master or junior, the rooms possess a winsome richness in detail. While luxury is king, comfort reigns. Roomy, bespoke wardrobes. Warm colours. Sleek flooring underfoot. Bathrooms are en-suite, with his-and-hers basins.

以享尽奢华的方式开启并结束您的每一天。别墅的每一个房间都充满了丰富、迷人的细节设计：宽敞的定制衣橱、温暖的整体色调、光滑的脚底瓷砖、套房内的独立浴室均配备了双盥洗池。我们的贴心设计让您的生活奢华当道、舒适依旧。

A LEGACY TO TREASURE



SITE PLAN 总平面图

LEGEND:

Basement 地下层

- 1 Main Entrance
主入口
- 2 Entrance Pavilion
入口亭
- 3 25 m Swimming Pool
25米小型健身泳池
- 4 Sun Deck
阳光甲板

- 5 Pool Cabana
池畔小屋
- 6 Gym
健身房
- 7 Bicycle Parking
自行车停放处
- 8 Pool Lounge
泳池休憩区

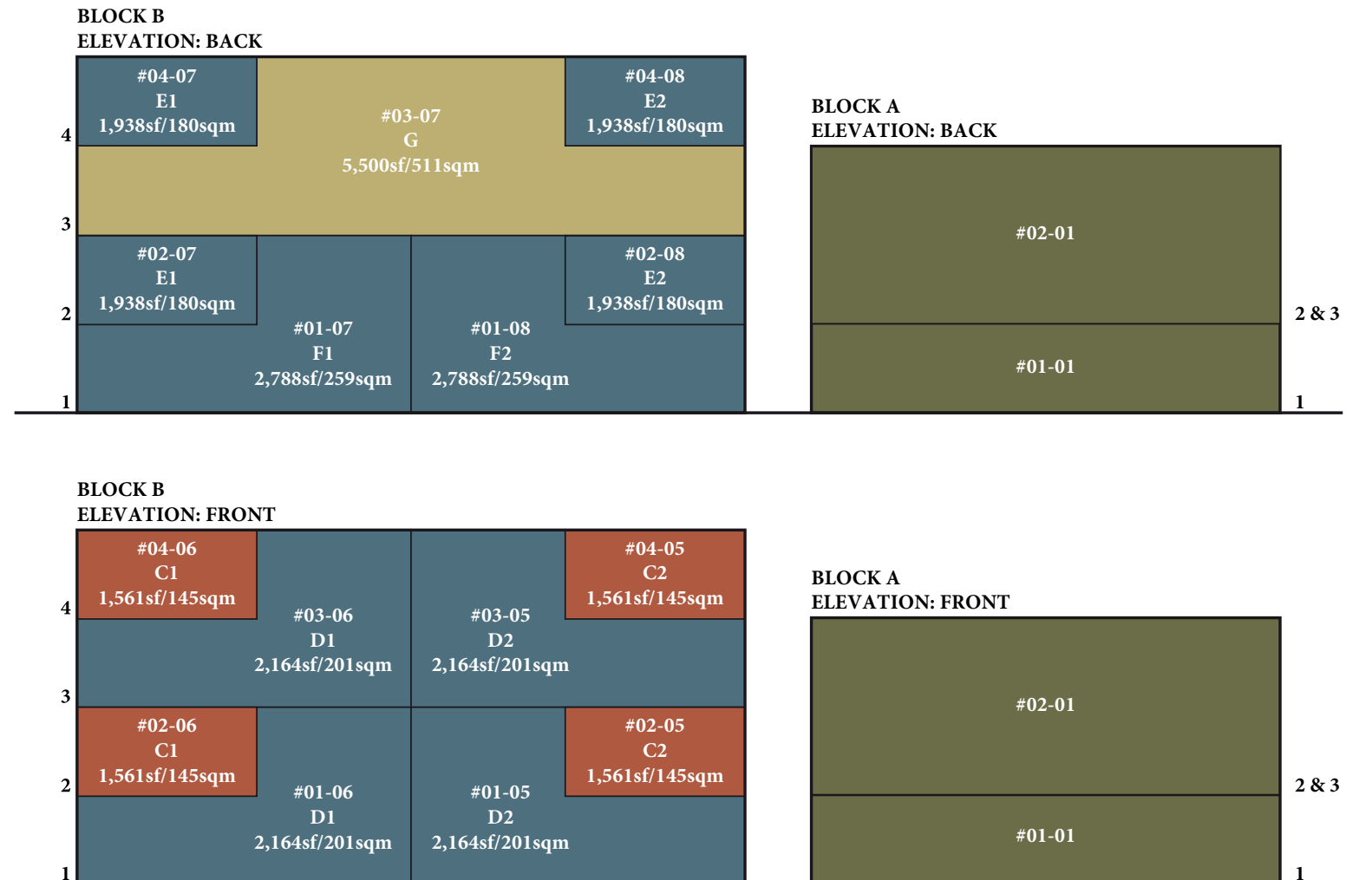
First Storey 一楼

- 9 BBQ Pavilion
烧烤庭
- 10 Garden Commune
社区花园
- 11 Communal Garden Trail
花园小径
- 12 Communal Lifestyle Lawn
休闲草坪
- 13 Communal Health & Wellness Corner
健身角

- A Genset
发电机组
- B Bin Point
垃圾间
- C Substation
变电站
- Water Tank
水箱

SCHEMATIC CHART 示意图

101 DALVEY ROAD, SINGAPORE 259514



	Blk A	
	3 Bedroom	3 卧室
	4 Bedroom	4 卧室
	5 Bedroom	5 卧室

While all reasonable care has been taken in preparing this brochure, the vendor and its agent(s) shall not be held responsible for any inaccuracies or omissions. Floor areas and other measurements are approximate only and may include A/C ledge, private lift lobby and exclude void area, and are subject to final survey. All information, plans and specifications are current at the time of print and are subject to changes as may be required or approved by the vendor and/or the relevant authorities. The vendor reserves the right to modify any part or parts of the building, housing project, development and/or any unit prior to completion as directed or approved by the relevant authorities.

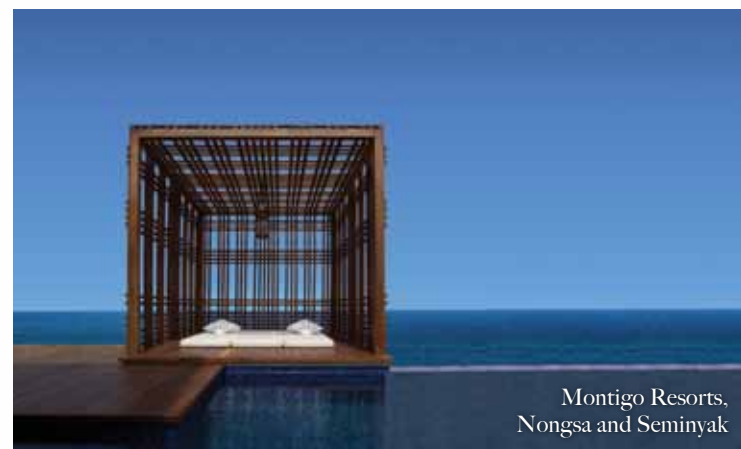
KOP PROPERTIES

WE BUILD YOUR DREAMS

KOP Properties is continually on a mission to fundamentally rethink and reinvent the places and ways in which we live. For the past decade, it has been building stellar properties on prime land. Apart from residential and commercial developments, the company's diverse portfolio also includes hotels, resorts and yachts.

In Central Singapore, The Ritz-Carlton Residences, (Singapore, Cairnhill), was a development of many firsts — KOP's first residential project, the first Ritz-Carlton serviced residence outside of North America, and a first of its kind in Asia. Hamilton Scotts was launched immediately after, as the world's tallest ultra-luxury condominium with en-suite car porches. Venturing into hospitality, KOP then introduced the Montigo Resorts, an award-winning brand of top-tier seafront oases in Indonesia. There is also Wintastar, the upcoming integrated sports-entertainment-tourism ski resort in Shanghai.

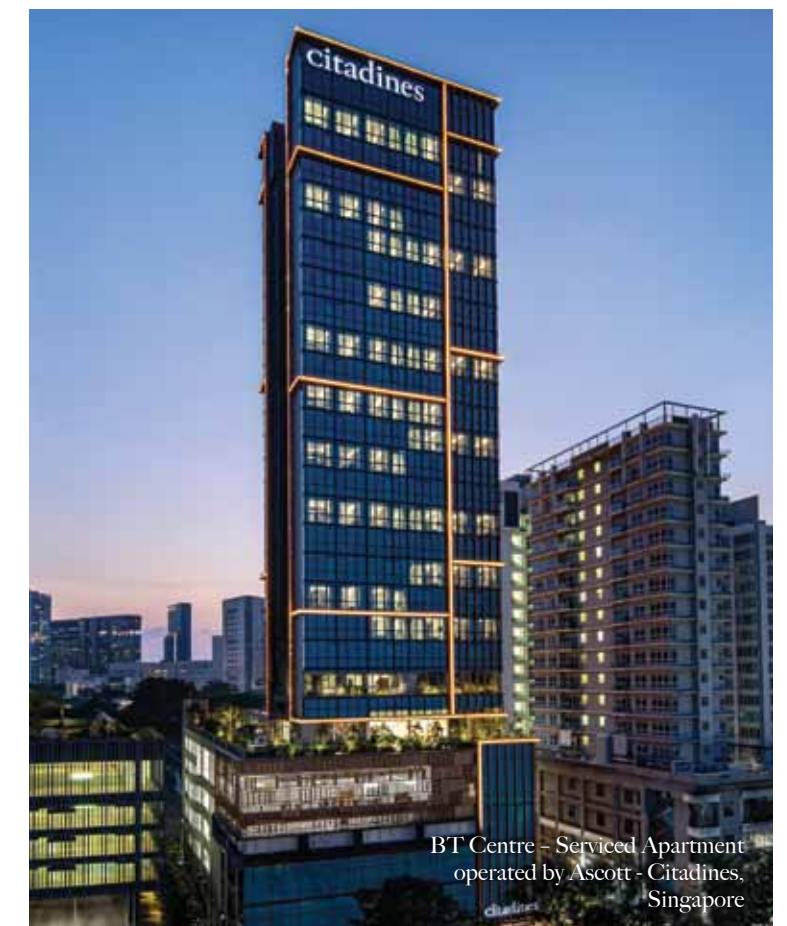
Set to make waves in Singapore's prime District 10, Dalvey Haus is a freehold residence near the Tanglin-Orchard enclave with its proximity to the Singapore Botanic Gardens and fashioned with impeccable interiors. Elegantly refined and designed for the discerning few, this coveted development is a hallmark of KOP's taste for understated quality and luxury.



A VISIONARY BUILDER

Low Keng Huat (S) Limited (LKHS), a diversified group consisting of 33 subsidiaries and 12 associated companies, is involved in three core activities – property development, property investment and building construction.

Established in 1969 and listed on the Singapore Stock Exchange, LKHS contributed significantly to the shaping of Singapore's breathtaking skyline. It is notable for its diverse portfolio, including People's Park Complex, the first commercial housing project under the Urban Renewal Department of the Housing and Development Board's Sale of Sites programme; the 52-storey OCBC Centre, once hailed as the tallest building in Singapore; Hard Rock Hotel & Convention Centre located inside Singapore's first Integrated Resort in Sentosa; and the restoration of CHIJMES from a Catholic convent to an iconic commercial landmark of Singapore, which has been accorded the URA Architecture Heritage Award. Two of its residential developments also won the coveted FIABCI Prix d'Excellence Award – One North Residences and Duchess Residences.



MASTERS OF GRAND DESIGNS

eco.id

eco.id Architects and Design Consultancy is a multi-disciplinary architectural firm based in Singapore, with regional offices in Shanghai and Bangkok. eco.id has captured international repute with their award winning builds in Asia since 1997. It also has a growing list of projects that continue to grace the pages of international design books and reputable architectural magazines. Its footprint has now expanded across Southeast Asia and beyond to China, India, Kazakhstan, the Middle East and Africa. Delivering a range of projects in these varied geographical and cultural settings is a testament to their ability to create the sublime even in unfamiliar settings.

Accolades line the pages of its history. Its Four Seasons Resort Seychelles garnered the Design et el UK awards for Best Beach Hotel and Best Restaurant (Regional) in 2019, as well as Best Resort and Best Landscaping & Outdoor Spaces at the AHEAD MEA Awards 2019. The Ivy Bound International School in Bangkok received the Highly Commended Award at the 2015 World Architecture Festival, and Naumi Hotel in Singapore received the President's Design Award in 2008. Equally noteworthy are the various recognitions for W Maldives, COMO Metropolitan Bangkok, Montigo Resorts in Batam, The Ritz-Carlton Residences in Singapore, and Hamilton Scotts, the world's tallest residences with sky garage. This will be joined by Dalvey Haus as eco.id's masterpieces in collaboration with KOP Properties and Low Keng Huat (Singapore) Limited.



Four Seasons Resort, Seychelles



COMO Metropolitan, Bangkok



LTW Designworks has an established reputation as a team of accomplished designers, innovators and narrators of space. Going beyond design and creation, these prolific talents transform and energise luxury hospitality and residential interiors that respond organically to their coveted locations.

Since its inception in 1980, the global award-winning studio headquartered in Singapore, with satellite offices in Beijing, China and Milan have built an impressive body of work with the world's top hoteliers and luxury developers. LTW has designed more than 120 hotels and currently has over 20 projects in development. Our portfolio consists of projects like The Ritz-Carlton Hong Kong, Four Seasons Seoul, JW Marriott Qufu, Shangri-la Colombo, Grand Hyatt Xi'an and many more. In many of the world's major cities, from East to West, from superstructures to prestigious first-of-its-kind residences, each one is an emblem of luxury living. In creating Dalvey Haus with KOP Properties, LTW presents a compelling narrative, from a respect for a sense of place and a commitment to innovation to deliver an exclusive and unique experience to each individual.



Four Seasons, Seoul



The Ritz-Carlton, Hong Kong

DALVEY HAUS

ABSOLUTE LUXURY
YOURS FOR THE TAKING

(+65) 8218 3116

KIM@DALVEYHAUS.COM

WWW.DALVEYHAUS.COM

NAME CARD
SIZE: 90MM X 55MM

DISCLAIMER: While every reasonable care has been taken in preparing the brochure, the Vendor and its agent shall not be held responsible for any inaccuracies in its contents. All statements are believed to be correct but are not to be relied on as representations of fact. Renderings and illustrations are artists' impressions only and cannot be regarded as representations of fact. Photographs cannot be regarded as representation of the as-built standard specifications and facilities. All plans, internal layouts, information and specifications are subject to change and shall not form part of an offer or contract. The Vendor reserves the right to modify any part or parts of the building prior to completion as directed or approved by the building authority. All plans are subject to any amendments approved by the relevant authority. The floor areas and the breakdowns of the unit floor area as indicated in the sales brochure are approximate only. Unit floor areas are subject to final survey.

Developer: Dalvey Breeze Development Pte. Ltd. (UEN. 201819018W) • Developer's Licence No.: C1345 • Freehold / Encumbrance: Mortgage in favour of Hong Leong Finance Limited • Date of Notice of Vacant Possession: 30 June 2023 • Expected Date of Legal Possession: 30 June 2026 • Location & Lot No.: Lot 01086C TS25 at 101 Dalvey Road